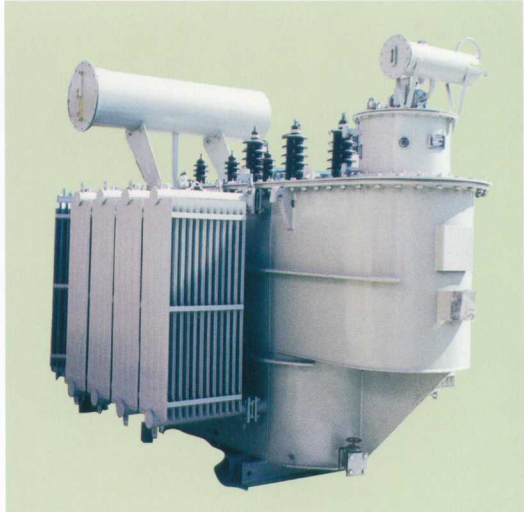


Oil-immersed Power Transformer

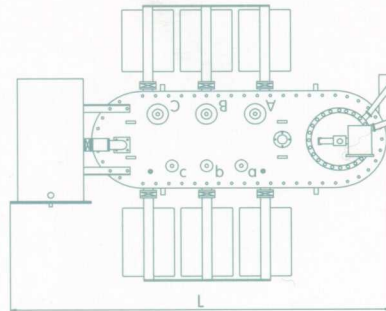
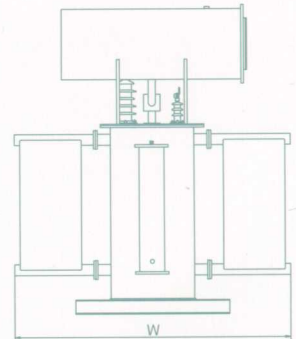
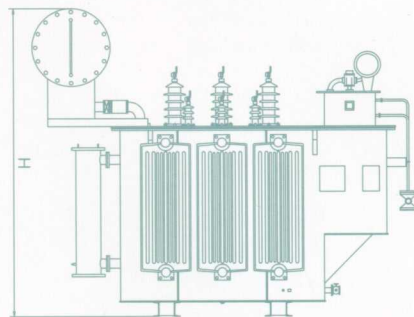
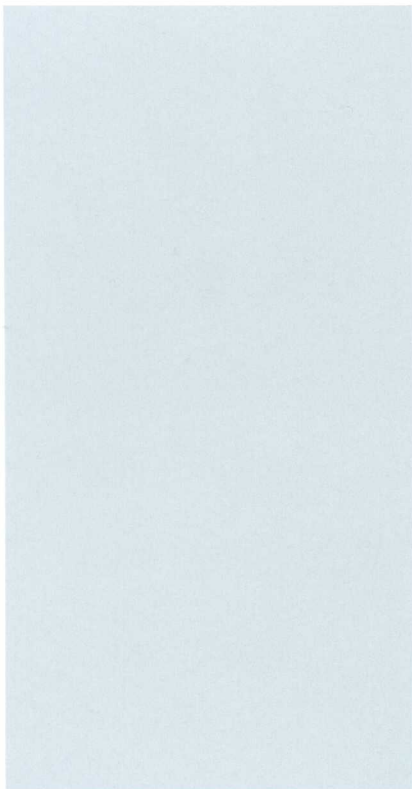
- 35kV Power Transformer
- 10kV Hermetically Sealed Distribution Transformer

35kV Power Transformer

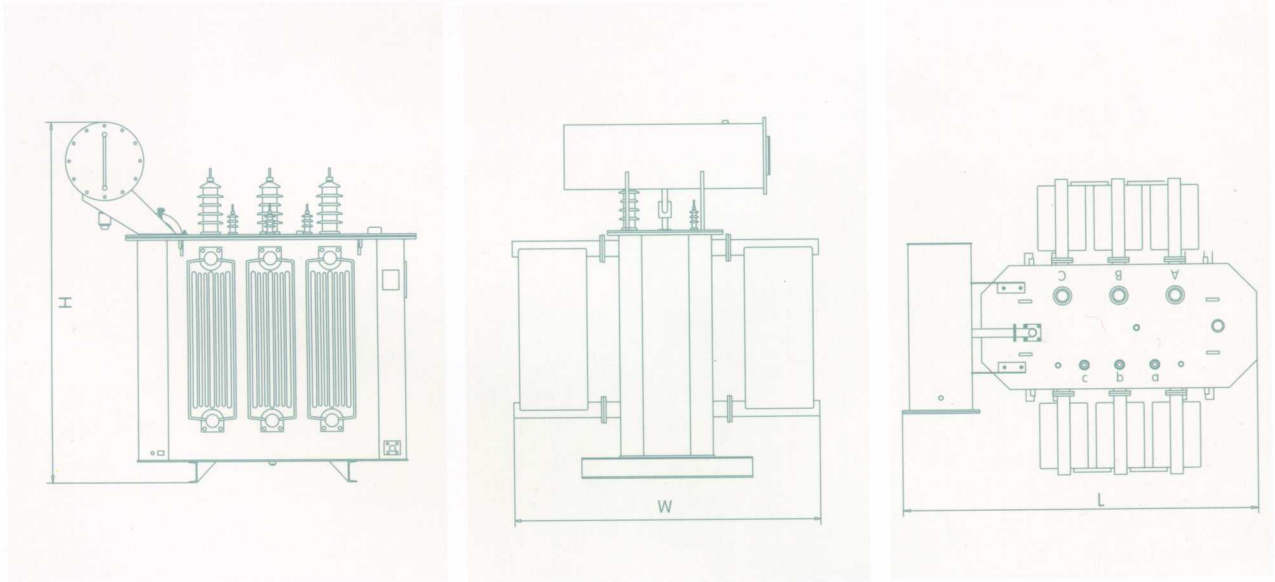


Product Feature

35 kV series Transformers are mainly applied to urban and rural electricity network and power transmission & distribution in industrial sector, including Oil-immersed natural air cooling transformers, transformers with no-load or on-load tap changers and hermetically sealed transformers. The active parts of transformers are located firmly so as to prevent the active parts from displacement and the windings from distortion due to long distance shipment and long term operation, the transformers can be connected directly with power network without untaking. In the same time, the transformers are static in performance, high in reliability, compact in structure and good in looking as well as energy saving and low in losses.



■ Outline Dimension Drawing of 35kV Double Winding Power Transformer with On-load Tap-changer



■ Outline Dimension Drawing of 35kV Double Winding Power Transformer with No-load Tap-changer

1

35kV Double-Winding Distribution Transformer with No-load Tap Changer ■ Technical Parameter

Rated Capacity (kVA)	Voltage Combination and Tapping Range			Connection Symbol	Short Circuit Impedance (%)	No Load Loss (KW)	Load Loss (KW)	No Load Current (%)	Outline Dimension (mm) (L×W×H)				
	High Voltage (KV)	High voltage Tapping Range	Low Voltage (KV)										
800	35 38.5	±5% Or ±2×2.5%	3.15 6.3 10.5	Yd11	6.5	1.11	9.35	1.00	2100×1670×2260				
1000						1.32	11.48	1.00	2290×1780×2410				
1250						1.57	13.86	0.90	2310×2000×2480				
1600						1.9	16.58	0.80	2350×2250×2520				
2000						2.37	18.28	0.70	2500×2350×2600				
2500						2.8	19.55	0.60	2550×2420×2650				
3150					7.0	3.44	22.95	0.56	2650×2480×2700				
4000									4.12	27.2	0.56	2700×2530×2880	
5000									4.88	31.2	0.48	2800×2650×2980	
6300									7.5	5.84	34.85	0.48	2900×2950×3150
8000													8
												YNd11	

2

35kV Double Winding Distribution Transformer
with On-load Tap-changer

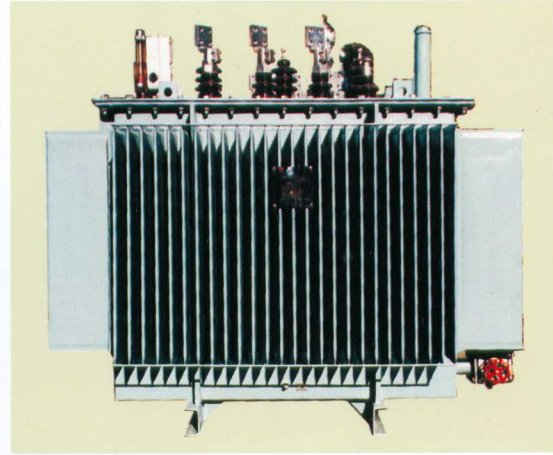
■ Technical Parameter

Rated Capacity (kVA)	Voltage Combination and Tapping Range			Connection Symbol	Short Circuit Impedance (%)	No Load Loss (KW)	Load Loss (KW)	No Load Current (%)	Outline Dimension (mm) (L×W×H)	
	High Voltage (KV)	High voltage Tapping Range	Low Voltage (KV)							
2000	35 38.5	± 3 × 2.5%	6.3 6.6 10.5 11	Yd11	6.5	2.57	19.13	0.80	2900 × 2420 × 2550	
2500						3.06	20.53	0.80	2950 × 2490 × 2580	
3150					3.64	24.57	0.72	3060 × 2870 × 2670		
4000					7.0	4.40	28.99	0.72	3410 × 3060 × 2860	
5000						5.20	34.00	0.68	3550 × 3100 × 3000	
6300				YNd11	7.5	6.24	36.55	0.68	3710 × 3170 × 3060	
8000						8.80	40.38	0.60	4010 × 3600 × 3450	
10000						10.40	47.77	0.60	4300 × 3600 × 3500	
12500						8.0	12.24	56.53	0.56	4900 × 3700 × 3900

10kV Hermetically Sealed Distribution Transformer

Product Feature

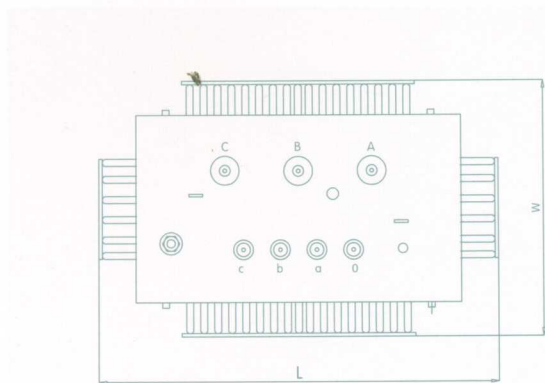
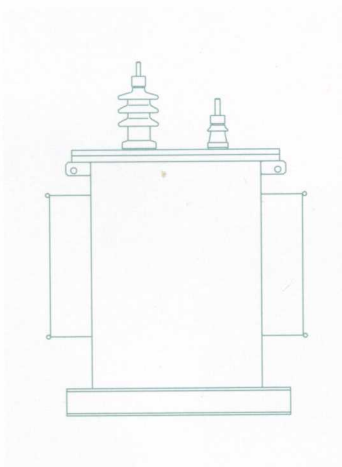
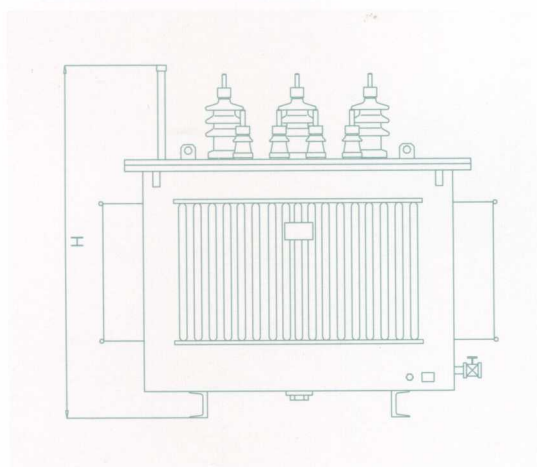
TBEA can manufacture 10kV transformers covering 80 specifications. The products possess features of less loss, low noise, maintenance free long expectancy, no need to untanking, high security, low partial discharge, low temperature rise, compact structure and good appearance. The products are applied to new urban and rural power network and power network upgrading. They are also exported to UAE, Pakistan and Nigeria in bulk.



10kV Hermeticall Sealed Double Winding Distribution Transformer with No Load Tap Changer

Technical Parameter

Rated Capacity (KVA)	Voltage Combination and Tapping Range			Connection Symbol	Short Circuit Impedance (%)	No Load Loss (KW)	Load Loss (KW)	No Load Current (%)	Outline Dimension (mm) (Lx W xH)
	High Voltage (KV)	High voltage Tapping Range	Low Voltage (KV)						
30	6 6.3 10 10.5 11	± 5% Or ± 2 × 2.5%	0.4	Yyn0 Dyn11 Yzn11	4.0	0.11	0.60	2.1	735 × 475 × 900
50						0.15	0.87	2.0	805 × 515 × 950
63						0.18	1.04	1.9	815 × 565 × 980
80						0.20	1.25	1.8	845 × 560 × 1030
100						0.23	1.50	1.6	860 × 645 × 1060
125						0.27	1.80	1.5	915 × 770 × 1090
160						0.31	2.20	1.4	960 × 780 × 1120
200						0.38	2.60	1.3	1250 × 710 × 1160
250						0.46	3.05	1.2	1360 × 780 × 1210
315						0.54	3.65	1.1	1340 × 760 × 1310
400						0.65	4.30	1.0	1450 × 790 × 1350
500						0.78	5.15	0.9	1530 × 865 × 1385
630						0.92	6.20	0.8	1635 × 920 × 1515
800						1.12	7.50	0.7	2015 × 1055 × 2050
1000						1.32	10.30	0.6	2180 × 1110 × 2095
1250						1.56	12.00	0.6	2195 × 1130 × 2195
1600	1.88	14.50	0.6	2360 × 1235 × 2255					



■ Outline Dimension Drawing of 10kV Hermetically Sealed Double Winding Distribution Transformer with No Load Tap Change