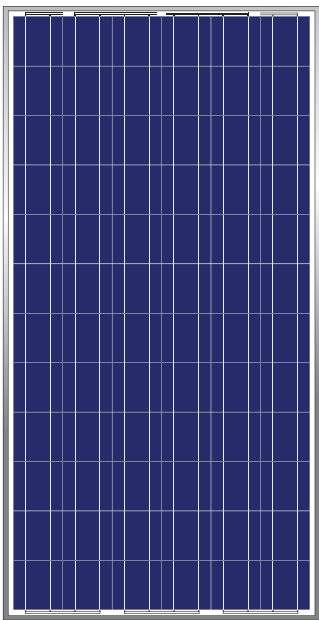


JAP6

72/250-295 SOLAR PHOTOVOLTAIC MODULE



PRODUCT OVERVIEW

- JA Solar's modules are optimally manufactured and adjusted to meet the needs of the current market; scientifically designed module dimension makes the installation simple and easy; each cell of the module is the acclaimed "Made by JA Solar".
- Our continuous efforts in quality assurance system and certifications the international authentication institutions of JA Solar's products demonstrate our commitment to product quality and customer requirements.

MODULE CHARACTERISTICS

- High efficiency crystalline silicon solar cells.
- High transmission low iron tempered glass, strong mechanical resistance.
- Standard waterproof junction box, with bypass diode.
- High endurance to different atrocious weather.
- Custom designed modules according to clients' requirement.

MECHANICAL PARAMETERS

Cell(mm)	Poly 156×156
Weight(kg)	27.5
Dimensions(L×W×H)(mm)	1970×991×50
Cable Length(mm)	≥1000
Cable cross section size(mm ²)	4
No. of cells and connections	72 (6×12)
No. of diodes	6
Packing configuration	20 Pcs./Pallet

WORKING CONDITIONS

Maximum System Voltage	DC 1000V(TÜV)
Operating Temp.	-40°C~+85°C
Maximum Series Fuse	15 A
Max. Wind Load / Max. Snow Load	2400Pa/ 5400Pa
Grounding conductivity	<0.1Ω
NOCT	47±2°C
Application Class	Class A
Insulation Resistance	≥100MΩ

GUARANTEE

10-year limited product warranty

Limited performance warranty: 10 years at 90% of the minimal rated power output, 25 years at 80% of the minimal rated power output

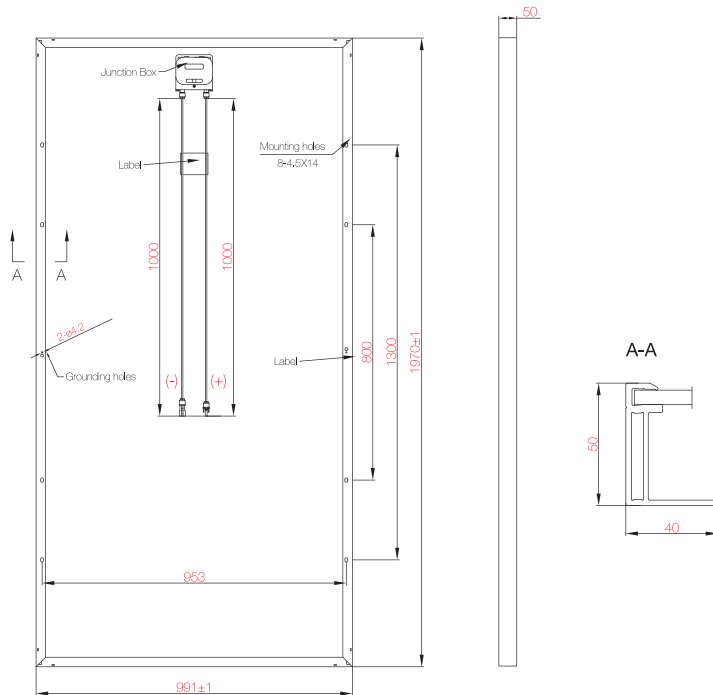
SHANGHAI JA Solar Technology CO., LTD.

Add: E6-E8 Plot, Minhang Export Processing Zone, Fengxian Shanghai 201401, China
Tel: +86 (21) 3718 1000 **Email:** service@jasolar.com
www.jasolar.com

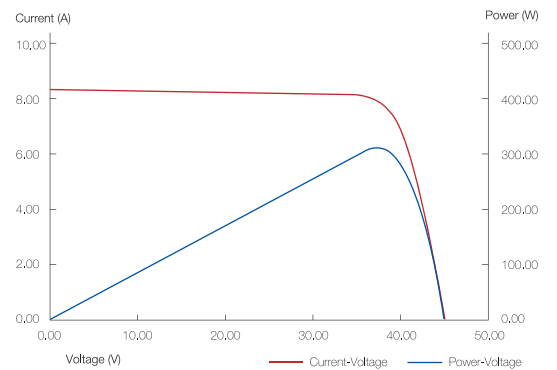


JAP6

72/250-295 SOLAR PHOTOVOLTAIC MODULE



I-V CURVE



ELECTRICAL PARAMETERS

TYPE	JAP6-72-250	JAP6-72-260	JAP6-72-270	JAP6-72-275	JAP6-72-280	JAP6-72-285	JAP6-72-290	JAP6-72-295
Rated Maximum Power at STC (W)	250	260	270	275	280	285	290	295
Open Circuit Voltage (Voc/V)	43.60	43.80	44.00	44.20	44.40	44.60	44.80	45.00
Maximum Power Voltage (Vmp/V)	35.26	35.76	36.00	36.52	36.75	37.01	37.47	37.82
Short Circuit Current (Isc/A)	7.80	8.00	8.20	8.25	8.32	8.38	8.42	8.48
Maximum Power Current (Imp/A)	7.09	7.27	7.50	7.53	7.62	7.70	7.74	7.80
Module Efficiency [%]	12.81	13.32	13.83	14.09	14.34	14.60	14.85	15.11
Power Tolerance	±3%							
α_{Isc}	+0.040%/°C							
β_{Voc}	-0.304%/°C							
γ_{Pmp}	-0.420%/°C							

SHANGHAI JA Solar Technology CO., LTD.

Add: E6-E8 Plot, Minhang Export Processing Zone, Fengxian Shanghai 201401, China
 Tel: +86 (21) 3718 1000 Email: service@jasolar.com
 www.jasolar.com

